

## DXS858-3/DXS858-4型

three-phase electronic reactive energy meter



three-phase electronic reactive energy meter

### 1.Application

DXS858-3/DXS858-4 series three-phase electronic reactive energy meter, is one kind of indoor three-phase meter. And it has high accuracy and feasibility. And it adopts the low consumption and large-scale integrated circuit technical and SMT technology, the long-life components to improve the stability and extend the using life. It also adopts the counter to measure reactive energy, direct reading and easy-using. This product conforms to standard of IEC 62053-21-2003, IDT.

### 2.Main technical parameter

specification

Model No.	Accuracy level	Rated voltage (V)	Basic current (A)
DXS858-3 3-phase 3-line electronic reactive meter	Reactive: 2.0 level	3×100 3×380	3×3 (6) 3×5 (20) 3×10 (40)
		3×57.7/100 3×220/380	3×15 (60) 3×20 (80) 3×30 (100)
DXS858-4 3-phase 4-line electronic reactive meter			

basic error: load with balance percent error limit

current		reactive 2.0 level	
direct connect	through Current transformer	factor $\sin\Phi$	error%
$0.05I_b \leq I < 0.1I_b$	$0.02I_b \leq I < 0.05I_b$	1	$\pm 2.5$
$0.1I_b \leq I \leq I_{max}$	$0.05I_b \leq I \leq I_{max}$	1	$\pm 2.0$
		0.5L	$\pm 2.5$
$0.1I_b \leq I < 0.2I_b$	$0.05I_b \leq I < 0.1I_b$	0.8C	$\pm 2.5$
		0.5L	$\pm 2.0$
$0.2I_b \leq I \leq I_{max}$	$0.1I_b \leq I \leq I_{max}$	0.8C	$\pm 2.0$

## DXS858-3/DXS858-4型

three-phase electronic reactive energy meter

### electrical parameter

operate voltage power-supply	0.9Un~1.1Un
operate environment temperature	-20℃~+50℃
ultimate temperature	-30℃~+60℃
storage temperature	≤85%
voltage circuit power consumption	<2W

### mechanical parameter

shape dimension	230mm×145mm×74mm
weight	about 1.7kg

### start

through CT connect: active ≤0.002lb, réactive ≤0.003lb. direct connect: active ≤0.004lb, reactive ≤0.005lb

shunt running

when voltage circuit is under 115% rated voltage and current circuit cut-off, meter impulse output no more than one.

### 3. Operate principle

circuit principle: power measure part adopts large-scale integrated circuit. Under unbalance voltage and current, it can measure reactive energy. Circuit consists of A/D transfer, power calculate, energy accumulation, anti-shunt. And it has advantages of high reliability, high accuracy, low consumption. The reactive energy adopts counter to indicate. And this meter adopts 3-phase power-supply mode, only if there is 2 phases has power (4-line meter has one phase voltage power supply), it can be operated normally.

### 4. Main function

#### ◆ Measure function

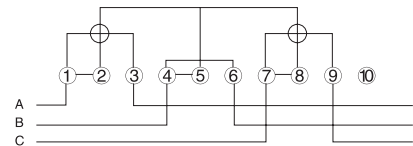
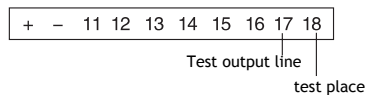
reactive power measure. 3-phase power-supply, if one phase or two phase power-off, measure accuracy has no influence.

#### ◆ output port

Reactive passive pulse output interface with Optocoupler

### 5. Terminal diagram figure

#### ◆ Functional terminal connection

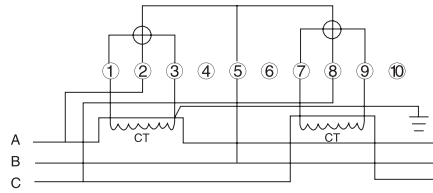


DXS88-3 type electronic meter direct connect diagram

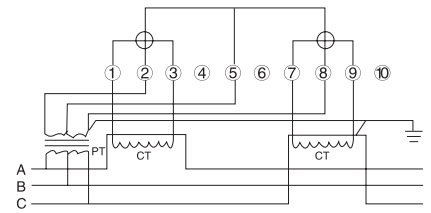
## DXS858-3/DXS858-4型

three-phase electronic reactive energy meter

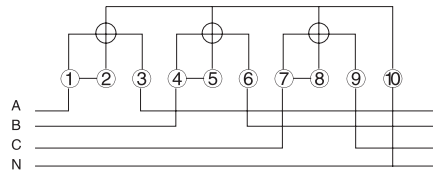
### ◆ Power terminal connect



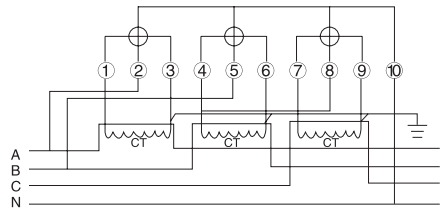
DXS858-3 electronic meter through Current transformer wiring diagram



DXS858-3 electronic meter through voltage and current transformer wiring diagram

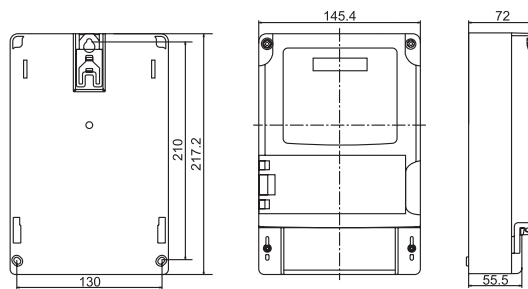


DXS858-4 electronic meter direct connect wiring diagram



DXS858-4 electronic meter through current transformer wiring diagram

## 6. Shape dimension



Shape and install dimension