

## DSS858/DTS858型

three-phase electronic active energy meter



three-phase electronic active energy meter

### 1.Application

DSS858/DTS858 type three-phase electronic active meter adopts the low consumption solid state integrated technology and SMT manufacture to ensure the measure accuracy and stability. And this product conforms to standards of IEC 62053-21-2003, IDT function and features:

- 1)three-phase bidirectional active power measure,one or two phase loss do not influence the measure accuracy.
- 2)wide operate temperature range,high stability,long-term operate need no adjust
- 3)has power test signal output
- 4)has power-off phase-loss indicator(selectable)

### 2.Main technical parameter

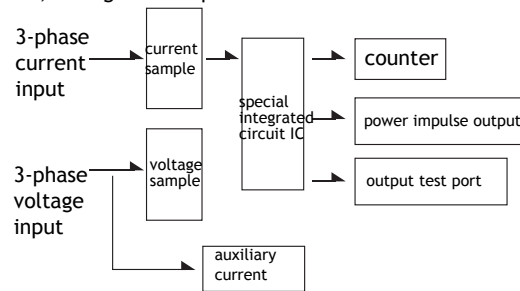
model	type	reference volage Un	rated current In	impulse constant
DSS858	3-phase	3×100V	3×1.5(6)A	Take the impulse constant marked on the meter as standard
			3×3(6)A	
			3×1.5(6)A	
			3×3(6)A	
			3×2.5(10)A	
	4-line	3×380V	3×5(20)A	
			3×10(40)A	
			3×15(60)A	
			3×20(80)A	
			3×30(100)A	
DTS858	3-phase	3×57.7/100V	3×1.5(6)A	
			3×3(6)A	
			3×3(6)A	
			3×2.5(10)A	
			3×5(20)A	
	4-line	3×220/380V	3×10(40)A	
			3×15(60)A	
			3×20(80)A	
			3×30(100)A	
accuracy level	1level,2 level			
start current	≤ 0.4%Ib			
display mode	6 bit mechanical counter indicate total amount,resolution ratio is 0.01kWh			
power consumption	voltage circuit≤ 1W and 8VA, current circuit ≤ 0.6VA			
shunt running	has logic anti-shunt function			
environment				
operate temperature	-20° C~+50° C			
ultimate temperature	-30° C~+60° C			
relative temperature	annual average≤75%, 30days in the year humidity can up to 95%,others can up to 85%			
weight	about 2kg(moulded case)			
shape dimension	230 x145 x 74(moulded case)			
impulse constant(imp/kWh)	6400、3200、1600、800、400			

## DSS858/DTS858型

three-phase electronic active energy meter

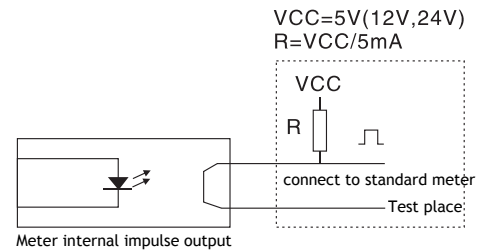
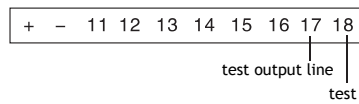
### 3. Operate principle

operate principle as Figure 1, sampling is completed by voltage divider and current transformer, and the voltage-current signal converts to power signal through power special integrated circuit. After the frequency division processing, it promotes the stepping machine to make counter operate, to realize the power measure. And meter has power test pulse output of optocoupler isolation, see Figure 2. Impulse width is  $80\text{ms} \pm 20\text{ms}$ .

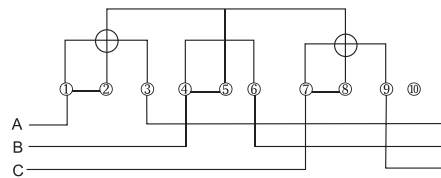


### 4. terminal wiring diagram

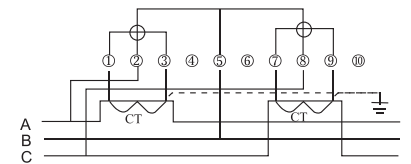
#### ◆ Function terminal wiring



#### ◆ Power terminal wiring



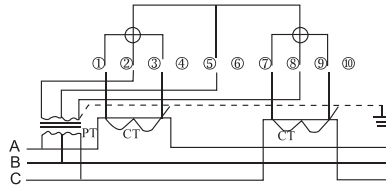
3-phase 3-line electronic meter direct connect wiring diagram



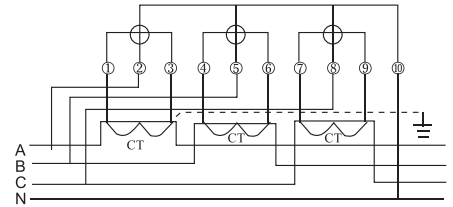
3-phase 3-line electronic meter CT type wiring diagram

## DSS858/DTS858型

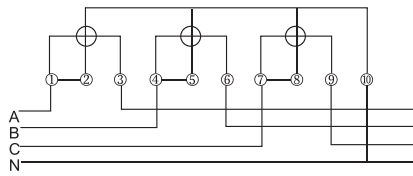
three-phase electronic active energy meter



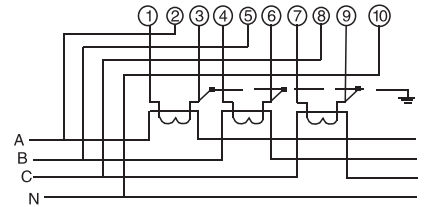
3-phase 3-line electronic meter through voltage-current transformer type diagram



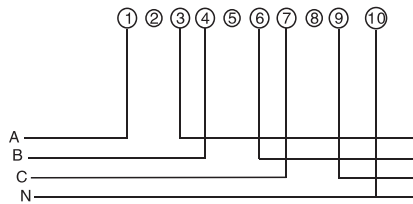
3-phase 4-line electronic meter through current transformer type diagram



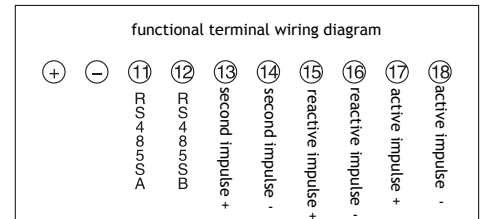
3-phase 4-line electronic meter direct connect diagram



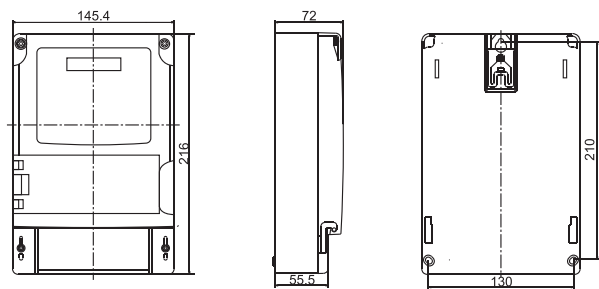
3-phase 4-line power terminal diagram



3-phase 4-line power terminal diagram



## 5. Shape dimension



Meter shape dimension and install dimension